



BORDER FOCAL POINT

Publications catalogue



#EUBorderRegions

BORDER FOCAL POINT

Publications catalogue

Boosting Growth and Cohesion in border regions

The 40 internal land border regions of the European Union (EU) are economically weaker than their national averages.

For this reason, the 2017 Communication “Boosting Growth and Cohesion in EU Border Regions” (COM(2017)534) and the 2021 Report “EU Border Regions: Living Labs of European integration” (COM(2021)393) led to the set up of the “Border Focal Point”. The work of this team in DG REGIO D.2 focuses on providing support “beyond funding” to cross-border cooperation and complements Interreg. This work includes actions of a political, technical and legal nature.

This catalogue brings together the publications of the Border Focal Point, delving into the persistent legal and administrative obstacles faced by border regions, along with possible solutions. It encompasses specific analyses in various thematic areas. To access each publication, follow the accompanying link.

To find out more about border-related issues and solutions, take a look at the Border Focal Point Network online platform! This platform was designed to enable border stakeholders to discuss best practice, how to help cross-border regions overcome border obstacles and exploit their untapped potential, thus helping to build a stronger border community.

Border Focal Point Network webpage:

<https://futurium.ec.europa.eu/en/border-focal-point-network>

B-Solutions

b-solutions is an initiative promoted by the European Commission's Directorate-General for Regional and Urban Policy (DG REGIO) and managed by the Association of European Border Regions (AEBR), which supports border regions in resolving obstacles to cross-border cooperation. It enables local and regional actors to indicate the obstacles to cross-border cooperation they encounter, and to benefit from legal support and analysis to detect and assess the causes of these obstacles and potential solutions. b-solutions publications present the results of this initiative since its inception.



This most recent compendium of cases, published in 2024, presents and details 41 cases of obstacles selected in 2022 and 2023 in the framework of the b-solutions initiative.

<https://data.europa.eu/doi/10.2776/230270>



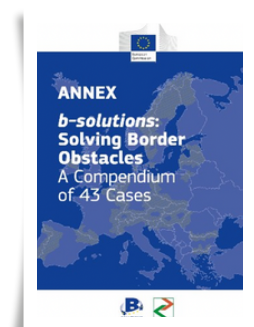
This compendium of cases, published in 2021, describes in detail each of the 47 obstacles that were supported through the b-solutions initiative during 2020 and 2021.

<https://data.europa.eu/doi/10.2776/078769>



This first compendium, published in 2020, of 43 cases which were supported in the framework of the b-solutions initiative during 2018 and 2019 includes a detailed methodology, an overview of the proposed solutions per thematic area and main conclusions.

<https://data.europa.eu/doi/10.2776/239689>



This publication is a compendium of the summaries of reports produced by actors of cross-border cooperation and legal experts in the framework of the b-solutions initiative. This publication is an annex to the first volume "b-solutions: Solving Border Obstacles – A Compendium of 43 Cases", published in 2020.

<https://data.europa.eu/doi/10.2776/36819>



This publication, published in 2024, features nine stories that highlight the reality of people experiencing border obstacles and ways to facilitate cross-border solutions throughout Europe.

<https://data.europa.eu/doi/10.2776/825972>



This publication, released in 2021, illustrates how the obstacles identified in the framework of the b-solutions initiative affect individuals and organisations in border regions by telling the stories of people directly affected in seven specific cases.

<https://data.europa.eu/doi/10.2776/825972>

These publications, released in 2021, describe the most recurrent obstacles in fields related to (1) the European Green Deal, (2) the cross-border provision of public services and (3) cross-border labour markets, as well as the solutions found for those obstacles.



(1) <https://data.europa.eu/doi/10.2776/305111>

(2) <https://data.europa.eu/doi/10.2776/70129>

(3) <https://data.europa.eu/doi/10.2776/511336>

HEALTHCARE



This booklet, published in 2018, presents cooperation projects in cross-border healthcare which are a snapshot of success factors and lessons learned from experience on the ground. Their stories – also shared during conference workshops – provide inspiration to project leaders, healthcare managers and decision-makers across Europe.

<https://data.europa.eu/doi/10.2776/83487>



This study, published in 2018, investigates past achievements and potential future developments in the field of cross-border healthcare cooperation. It provides new knowledge to the field on different aspects of cross-border healthcare research. The study also provides practical tools to assist stakeholders, including local and regional authorities, who intend to start a cross-border healthcare collaboration project.

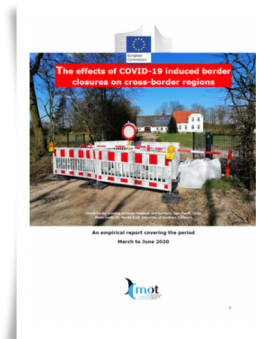
<https://data.europa.eu/doi/10.2875/825256>



This study, released in 2017, provides an overview of cross-border cooperation in the area of healthcare initiatives and provides a number of good examples of fruitful cross-border cooperation between countries and regions. Among many cross-border projects it puts particular emphasis on the mutually beneficial collaboration in the border region between Belgium and France.

<https://data.europa.eu/doi/10.2776/271537>

COVID-19



This publication, released in 2021, aims at drawing lessons from an assessment of the impact of the COVID-19 measures along the EU's internal borders on cross-border communities at large (businesses, workers, citizens) and presenting recommendations for the future, addressed to the European Commission on how the resilience of cross-border regions could be improved in case further crises emerge.

<https://data.europa.eu/doi/10.2776/092793>



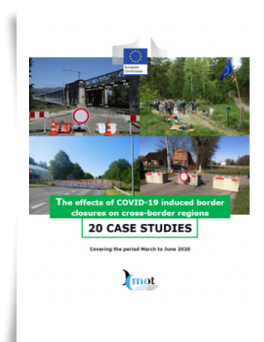
This publication, released in 2021, gives the reader an insight into case studies of 20 different European border regions, showing how the COVID-19 measures affected the cross-border regions covering March to June 2020.

<https://data.europa.eu/doi/10.2776/085716>



As an update and follow-up to the 2021 report “Analysis of the impact of border-related measures taken by Member States in the fight against COVID-19”, this study, published 2022, assesses two years of border management linked to the pandemic and their impact on border regions, and draws some recommendations for their management in the future, also taking into account the current revision of the Schengen Borders Code.

<https://data.europa.eu/doi/10.2776/665309>



This report, published in 2022, focuses on the economic impacts of border-related measures, introduced with the emergence of COVID-19, on cross-border regions. Measures such as plant closures, ban on public gatherings and events, and border controls caused a severe macroeconomic downturn in all EU's internal border regions, hitting almost all major components of aggregate income (i.e. consumption, investments, exports, and imports). The authors of the present report simulated the costs of COVID-related closures in spring 2020, taking both the border increase and the macroeconomic measures into account.

<https://data.europa.eu/doi/10.2776/973169>

TRANSPORT



This study, published in 2022, focuses on the analysis of cross-border public transport services (CBPT). It presents an inventory of CBPT routes and services as of 2019/2020, and analyses the availability of these services in EU border regions. The analysis shows that availability of services and their modes differ heavily across the EU, with some border areas lacking any CBPT despite potential demand. Most obstacles are due to legal and administrative issues.

<https://data.europa.eu/doi/10.2776/289862>



This publication, complementing the above mentioned 2022 study, includes a toolbox with about 30 tools. The toolbox provides a structured overview of solutions to the development and implementation of cross-border public transport services (CBPT) beyond a stocktake of CBPT at one specific moment in time as presented in the web viewer.

<https://data.europa.eu/doi/10.2776/92181>



This publication, released along with the above mentioned toolbox, presents the inventory of 57 obstacles to cross-border public transport services (CBPT) in form of obstacle 'fiches'. About 60% of the obstacles refer to administrative issues. About 20% of obstacles concern either EU or national legal frameworks. Finally, another 20% of CBPT obstacles have other roots.

<https://data.europa.eu/doi/10.2776/739282>



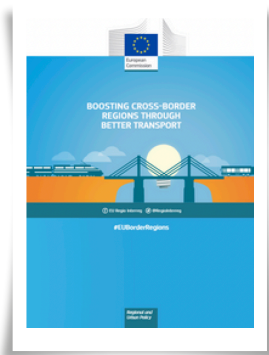
This publication was released for the conference “Boosting Cross-Border Regions through better transport”, organized by the European Commission in 2019. Its aim was to stimulate the continued debate on accessibility in cross-border regions. The conference was organized around three main themes: the Potential deriving from enhanced accessibility in cross-border regions; the Challenges faced to promote it; and the Tools available at European level.

<https://data.europa.eu/doi/10.2776/476001>



This study, published in 2018, provides an inventory of all cross-border rail connections along the EU and EFTA internal land borders, containing maps and data inter alia on the operational status, technical aspects and stakeholders of each connection. The viability, network relevance and investment need and funding opportunities of possible new railway connections are analysed. Finally, the study proposes recommendations how to smoothen the implementation of cross-border railway connections.

<https://data.europa.eu/doi/10.2776/69337>



This publication is an annex to the above mentioned 2018 study, containing facts-sheets of each cross-border rail connection.

<https://data.europa.eu/doi/10.2776/851562>

MORE ...



DISASTER AND RISK MANAGEMENT

Conducted from January 2023 to March 2024, this study aims to improve disaster and risk management (DRM) in EU border regions by identifying key risks, mapping tools, and engaging stakeholders. It highlights gaps in risk assessment and preparedness through ten case studies of effective DRM practices. Outcomes include maps and border fiches indicating risk levels and collaboration. The study provides recommendations to enhance resilience by addressing gaps and using existing resources, focusing on legal frameworks and governance at EU and national levels.

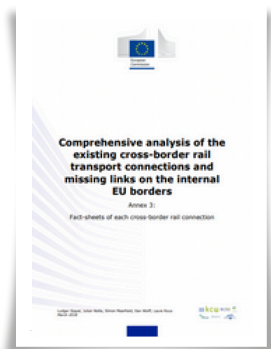
<https://data.europa.eu/doi/10.2776/832103>



PUBLIC SERVICES

This report, published in 2022, presents the final findings of the study on cross-border public services (CPS) and complements the previous reports which focused on the conceptual framework, processes to achieve a sustainable CPS database and case studies. The report concludes with recommendations on further supporting sustainable data on CPS and achieving the best use of cross-border public services across Europe.

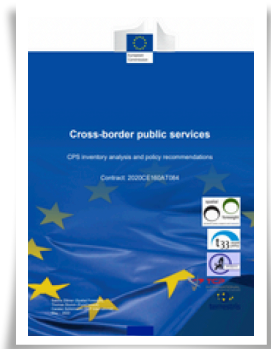
<https://data.europa.eu/doi/10.2776/0519>



OVERCOMING OBSTACLES

This summary report presents the results of the 2020 public consultation on overcoming border obstacles. The findings of this report serve as supporting evidence to European policies to continue boosting the improvement of cross-border cooperation in future years.

<https://data.europa.eu/doi/10.2776/089344>



DATA COLLECTION

This 2018 report stems from a pilot project called "Cross-border data collection," conducted by a consortium of statistical institutes from Belgium, France, Germany, Italy, Slovenia, Poland, Denmark, and the Netherlands. Focused on the labor market, the project aimed to create a methodology to produce cross-border information. It explored three data sources simultaneously: the Labour Force Survey (LFS), Administrative data, and Mobile phone data.

<https://data.europa.eu/doi/10.2776/182672>

CASE STUDY REPORTS:

Existing cross-border public transport services



- Bus line 831A Zittau (Germany) – Bogatynia (Poland)
<https://data.europa.eu/doi/10.2776/114577>
- Bus 350 Maastricht (Netherlands) – Aachen (Germany)
<https://data.europa.eu/doi/10.2776/86798>
- Bus line Suwałki (Poland) – Kaunas (Lithuania)
<https://data.europa.eu/doi/10.2776/498815>
- Bus line Gorizia (Italy) – Nova Gorica (Slovenia)
<https://data.europa.eu/doi/10.2776/746269>
- Bus connection Bedous (France) – Canfranc (Spain)
<https://data.europa.eu/doi/10.2776/457997>
- Seasonal cross-border tourism bus service ‘Mozart-Express’ Reit im Winkl (Germany) Salzburg (Austria)
<https://data.europa.eu/doi/10.2776/7959>
- Bus connection Hidasnémeti (Hungary) – Kechnec (Slovakia)
<https://data.europa.eu/doi/10.2776/568619>
- Bus connection Szombathely (Hungary) – Oberwart (Austria)
<https://data.europa.eu/doi/10.2776/926178>
- Bus line Verín (Spain) – Arcos de Valdevez (Portugal)
<https://data.europa.eu/doi/10.2776/409904>
- Ringlinjen Haparanda (Sweden) – Tornio (Finland)
<https://data.europa.eu/doi/10.2776/580868>



- Cross-border tram line 17 Geneva (Switzerland) – Annemasse (France)
<https://data.europa.eu/doi/10.2776/80112>
- Tram-train connection ‘Saarbahn’ Saarbrücken (Germany) – Sarreguemines (France)
<https://data.europa.eu/doi/10.2776/772382>



- Ferry Zimnicea (Romania) – Svishtov (Bulgaria)
<https://data.europa.eu/doi/10.2776/059459>
- Ferry service Greenore (Ireland) – Greencastle (Great Britain)
<https://data.europa.eu/doi/10.2776/671358>
- Ferry service Puttgarden (Germany) – Rødbyhavn (Denmark)
<https://data.europa.eu/doi/10.2776/06334>



- Rail link Budapest (Hungary) – Zagreb (Croatia)
<https://data.europa.eu/doi/10.2776/21117>
- ‘The Iron Ore’ railway line Narvik (Norway) – Kiruna (Sweden)
<https://data.europa.eu/doi/10.2776/688550>
- Rail link Maribor (Slovenia) – Bleiburg (Austria)
<https://data.europa.eu/doi/10.2776/24356>
- Rail link Vienna (Austria) – Győr (Hungary)
<https://data.europa.eu/doi/10.2776/760747>
- Rail link Entroncamento (Portugal) – Badajoz (Spain)
<https://data.europa.eu/doi/10.2776/748786>
- Tyrol suburban railway (S-Bahn Tirol) Line S3 Innsbruck(Austria) – Brenner / Brennero’ (Italy)
<https://data.europa.eu/doi/10.2776/470307>
- Cross-border railway line 70 Luxembourg – Rodange (Luxembourg) – Athus (Belgium)
<https://data.europa.eu/doi/10.2776/86769>
- Öresund train Copenhagen (Denmark) – Malmö (Sweden)
<https://data.europa.eu/doi/10.2776/351828>
- Rail connection Vidin (Bulgaria) – Craiova (Romania)
<https://data.europa.eu/doi/10.2776/591912>
- Railway connection Johanngeorgenstadt (Germany) – Karlovy Vary (Czech Republic)
<https://data.europa.eu/doi/10.2776/610351>
- Rail link Lille (France) – Tournai (Belgium)
<https://data.europa.eu/doi/10.2776/345621>
- Rail link RB 26 Berlin (Germany) – Kostrzyn nad Odrą (Poland)
<https://data.europa.eu/doi/10.2776/291121>
- Rail link Thessaloniki (Greece) – Sofia (Bulgaria)
<https://data.europa.eu/doi/10.2776/977915>
- Rail service Gorzanów (Poland) – Lichkov (Czechia)
<https://data.europa.eu/doi/10.2776/732634>
- Train connection Domodossola (Italy) – Spiez (Switzerland)
<https://data.europa.eu/doi/10.2776/213574>
- Rail link Debrecen (Hungary) – Oradea (Romania)
<https://data.europa.eu/doi/10.2776/85663>

 EU Regio Interreg

 @RegioInterreg

 REGIO-D2-CROSS-BORDER-COOPERATION@ec.europa.eu