

Lisbon's  
Green  
Participatory  
Budget :  
Presentation  
at the  
Mission  
Platform for  
Adaptation



LISBOA

23rd April 2024

## AGENDA

Where we  
are

What we  
do

How we do  
it

The  
citizen's  
role

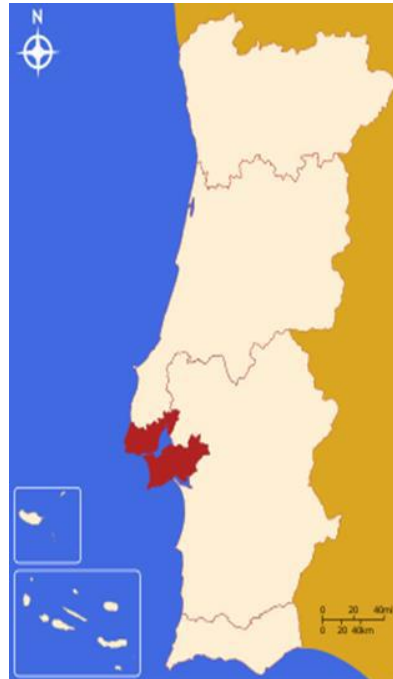
Results

Hightlights



# LISBOA

## Where we are



### LISBON Metropolitan Area

- ➡ Covers **18 municipalities**, which represents **3,3% of the national territory**
- ➡ Host **almost 3 million people**, nearly a fourth of the **Portuguese population**
- ➡ Aggregate **nearly 25% of the working population**, **30% of national companies**, **33% of employment** and contributes to **36% of the GDP** (Gross Domestic Product)

# LISBOA



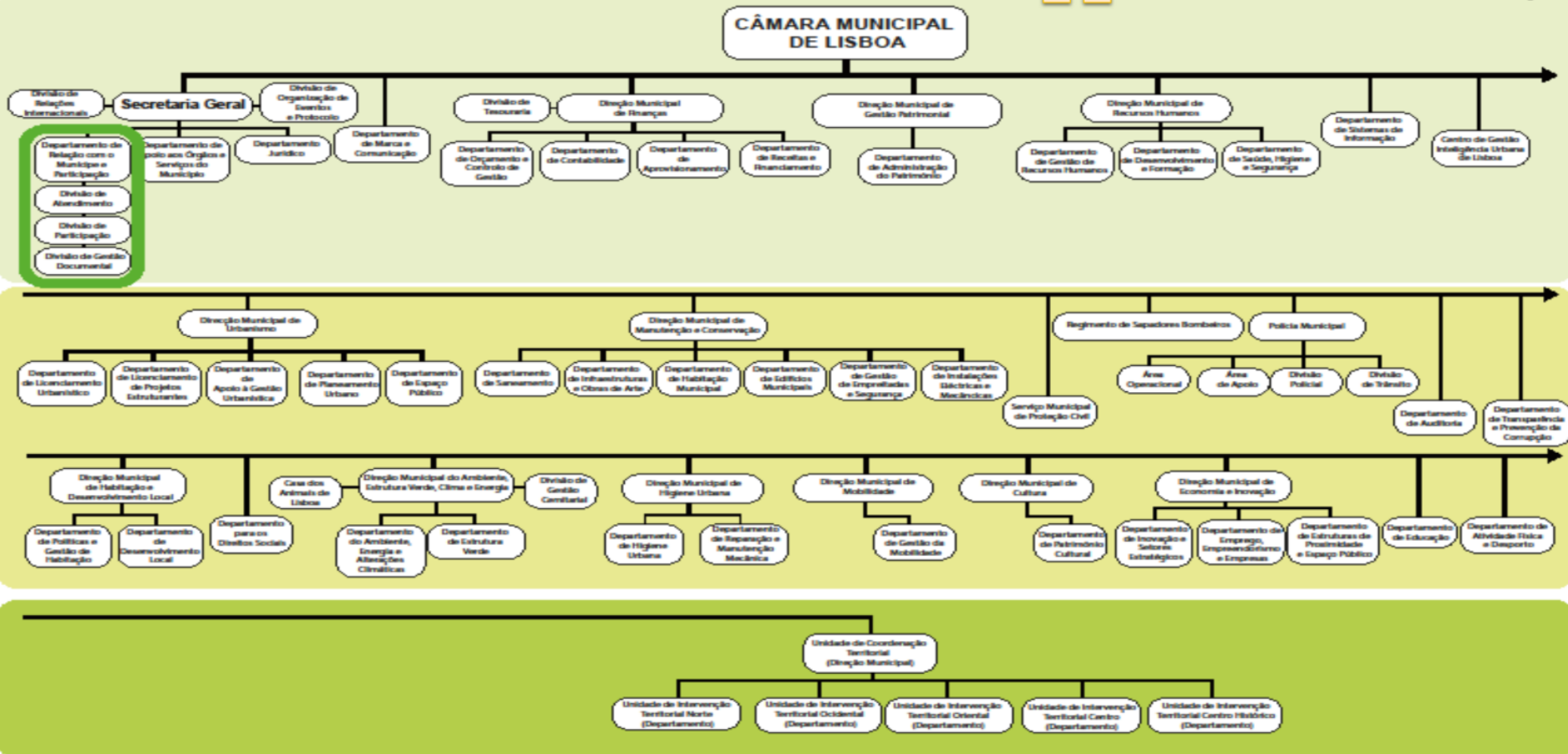


Where we are



Address: Campo Grande, nº 25, 1º A  
1749-099 Lisboa Portugal

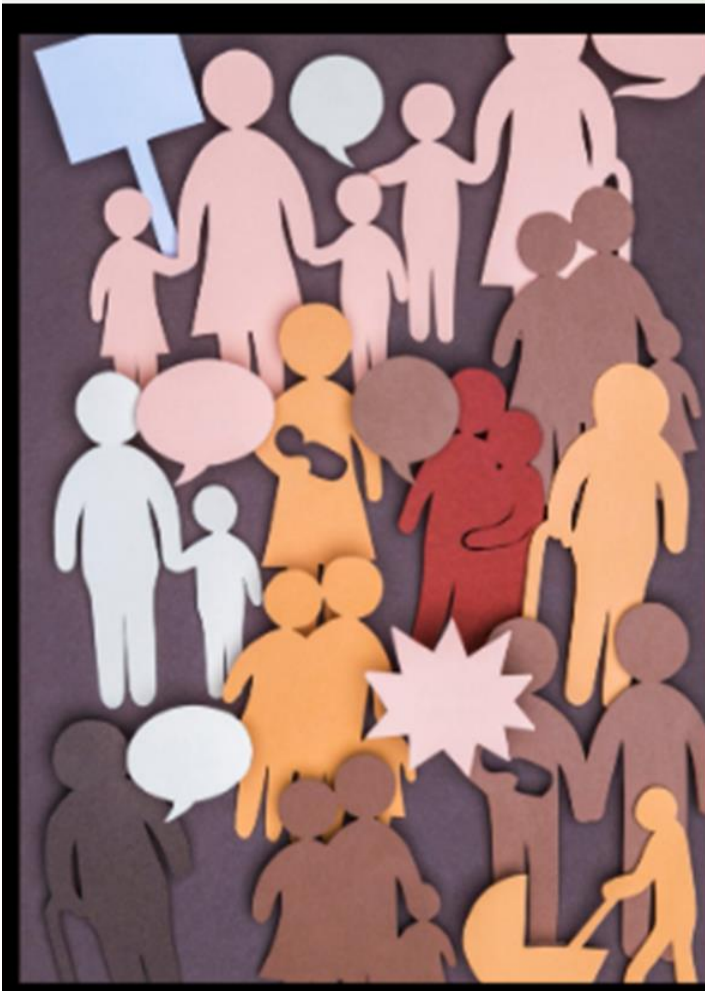
### Municipal Organisation Chart



**Municipal Services: Transversal, Sectoral and Territorial**  
**Total: 15 Municipal Directorates, 61 Departments, 112 Divisions**



## What we do



### Action Area 4 axes

- ✓ **Institution:** to support the operationalisation of a public strategy in the formulation and implementation of policies
- ✓ **Processes:** promoting the adoption of actions and mechanisms for the participation of citizens and organisations
- ✓ **Territory:** Enhancing the municipal territory according to the needs, perspectives and interests of citizens
- ✓ **Citizens:** Involving citizens and increasing the proximity between institutions, processes and citizens

### 3 Participatory practices

- Participatory budgeting
- Citizens' council
- Support for municipal projects involving participation

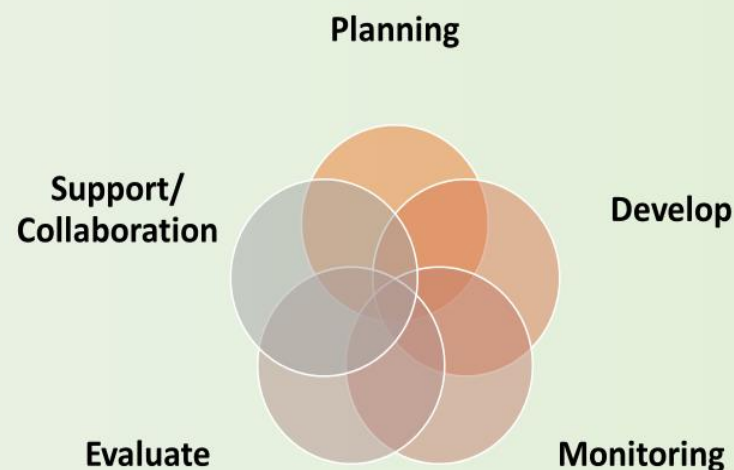


## What we do



### Scope of action:

Municipality – Citizens – Services – External Entities



### Participatory Practices in the Municipality

Institutional actions and experiences to involve citizens in local policy decision-making according to their needs and values, with the aim of bringing the municipality closer to the people.



## Challenges and Measures

### Climate risks and their projection until the end of the century:

- Heat waves
- Cold weather
- Heavy rainfall
- Flooding

### The Municipal Climate Change Adaptation Strategy

- Lisbon General Drainage Plan 2016-2030
- Heat Waves Project
- Lisbon Climate Action Plan 2030

(Goals: e.g. carbon neutrality 2050)

LISBOA



Contributions  
of Lisbon's  
Participatory  
Budget to  
climate  
change  
mitigation  
and  
adaptation

**PB as a tool for:**

- Raising awareness and
- Involving the population (direct democracy), contributing to the mitigation or adaptation of / to the dramatic effects of climate change

**Lisbon has more OP mitigation projects** (e.g. reducing air pollution) **than adaptation projects** (e.g. drainage plans and heat waves are top down)

**Lisbon is part of a group of cities that have chosen PB projects that convert parking lots into green spaces, with the revitalization of biodiversity and/or urban gardens** (e.g. Jardim do Caracol da Penha)

LISBOA

## How we do it

**Model 1:  
2008 a 2017**



Charter of Principles

Rules

Comprehensive  
Themes

Relevant  
expression in  
"green" areas

All public  
areas

- Inspired by the values of Participatory Democracy (Article 2 of the Constitution of the Portuguese Republic)
- Charter of Principles of the Lisbon Municipality PB approved in July 2008, year of 1st PB edition
- Global (City Council Responsibilities)

# LISBOA

## How we do it

**Participants:** 16 years old

**Submission of proposals:** online and participatory sessions

**Analysis of the proposals:** Municipal services with competence in the area of the proposals

**Voting on validated proposals:** Participants

**Process evaluation:** internal and external

**Development of proposals:** Municipal services and proposers

Empowering citizens

Monitoring  
Published information

### Framework:

- A citizen participation mechanism that allows citizens to decide on the allocation of a sum of money from the municipal budget to projects for the city according to established criteria

### Objectives:

- Promote dialogue between elected officials, technicians and citizens
- Contribute to civic education, enabling citizens to integrate their concerns with the common good
- To adapt municipal policies to the needs and expectations of the people
- To strengthen the quality of democracy

## Role of the citizen

1. No effect

2. Is Informed

3. Is Consulted

4. Partnerships

5. Delegation of power

6. Co-creation

Identify problems

Formulating recommendations

Participating in solutions

Implementing the project

Monitoring and evaluation

# LISBOA



## Model 2: 2018 / 2019: oriented towards environmental sustainability

International Sustainability Agenda

Agenda 2030 | ODS

SDG 11: Urban challenges and participation

Agreements with cities



Lisbon main goals:

1. Carbon neutrality by 2050

2. Reduce energy consumption by 60%

3. Limit public lighting consumption by 67 %

4. Increase solar energy production

## OP Green Seal 2018 / 2019

- Web platforms.
- Clean vehicles.
- Solar panels

- Green roofs,
- Installation of drinking fountains

1. Climate change. Mitigation

2. Climate change. Adaptation

4. Nature and biodiversity

3. Sustainable mobility

- Creation of vegetable gardens.
- Tree plantations.

- Cycle paths.
- More pedestrian space

School PB 2019

4 schools. Students 5th to 8th.

Themes: Energy | Water | Mobility | Waste | Education for Sustainability | Nature and Biodiversity

# LISBOA

## Green Participatory Budget. 2021. Model 3. PB Green

With the aim of promoting a more sustainable, resilient and environmentally friendly city, stimulating society towards common development objectives

In the context of the Lisbon European Green Capital 2020 award and the European Capital of Sport 2021, the OP 2021 edition, known as Green PB, was dedicated to the themes of:

- energy and environmental sustainability, combating climate change
- practice of physical activity, health and well-being

**€ 2,500,000:**

**Group 1:** Public works contracts with a value of less than €150,000

**Group 2:** Acquisition or rental of movable property or purchase of services with a value of less than €75,000

Pact  
Ecological  
European

Pandemic  
times

The organisation of the OP was based on 8 categories that promoted the following themes, more specifically:

1. Climate change adaptation and mitigation
2. Clean and renewable energy
3. Circular economy
4. Efficient revitalization of the building
5. Reduction of pollution and preservation /recovery of the ecosystem and biodiversity
6. Fair food system
7. Smart and sustainable mobility
8. Sport and promotion of physical and mental health

## LISBON PB | HIGHLIGHTS

- ✓ **The first European Capital to implement PB**
- ✓ **Inspiring example for other PBs, at a national level, and European Cities**
- ✓ **Universal** - For all citizens (more than 16 years)
- ✓ **Process open to non-resident citizens from the start**
- ✓ **An open model**
- ✓ Model with **deliberative dimension** (co-decision):

Citizens submit proposals and vote directly on projects they choose, until the budget limit annually defined for co-decisional processes is reached.

The winning projects are integrated into the proposed budget and activity plan for the municipality the following year.

# LISBOA



## LISBON PB | HIGHLIGHTS

Falanga, Roberto & Verheij, Jessica & Bina, Olivia. (2021). Green(er) Cities and Their Citizens: Insights from the Participatory Budget of Lisbon. Sustainability. 13. 10.3390/su13158243.

Key Topic	Proposals (2008–2018)	Projects (2008–2018)	Votes (2008–2018)	Funding (2008–2018)
1 'city/neighbourhood'	163	3	5298	1,800,000 euros
2 'recovery'	223	9	6494	3,250,000 euros
3 'gardens'	255	16	31,351	6,340,000 euros
4 'farming'	31	1	346	150,000 euros
5 'mobility'	48	2	4832	3,100,000 euros
6 'animals'	30	5	6382	825,000 euros
7 'energy'	16	1	89	500,000 euros
8 'pollution'	19	1	71	50,000 euros

Source: Lisbon city council (<http://op.lisboaparticipa.pt>, accessed on 12 June 2021).

≈ 16 M  
(2018)

≈ 18,5 M  
(2021)

≈ 50%

# LISBOA

# LISBON PB | HIGHLIGHTS

## Results achieved:

- Since 2008 . 13 editions . 15 years
- Proposals submitted 6,994
- Projects voted on 2,141
- Number of votes 181,046
- 162 winning projects
- Best practice award in 2018
- Overall value: 35. 799 MILLION € APX

## Benefits

**Green spaces:** Gardens

**Culture:** Library; Monuments

**Mobility:** Cycle paths

**Education:** Improving facilities and services in schools

Year PB	Nº proposals submitted	Nº projects to vote on	winning projects	Votes
2008	580	89	5	692
2009	533	200	12	2.357
2010	927	291	7	3.951
2011	808	228	5	7.612
2012	659	231	15	12.124
2013	551	208	16	20.646
2014	669	211	13	15.362
2015	481	189	15	25.179
2016	562	182	17	28.818
2017	434	128	15	25.996
2018	539	122	19	27.062
2021	251	69	23	11.247
<b>Total</b>	<b>6994</b>	<b>2148</b>	<b>162</b>	<b>181.046</b>

# LISBOA





## LISBON PB | HIGHLIGHTS

- ✓ **With Multiplier Effects - Influencing and shaping policies / Changing the city / Creating dynamics among stakeholders / CoResponsability and greater interconnection when one is involved in the solution itself.**
- ✓ **The case of the Green Participatory Budget, which before it was, already was.**

LISBOA

# JUNTOS DECIDIMOS

DJUNTOS NO NA DECIDI  
ENSEMBLE NOUS DÉCIDONS  
TOGETHER WE DECIDE  
HOTĂRĂM ÎMPREUNĂ  
ВИРІШИМО РАЗОМ  
我们一起决定  
معا نقرر



Thank you for your attention !

[www.lisboaprticipa.pt](http://www.lisboaprticipa.pt) | [www.facebook.com/lisboaparticipa](http://www.facebook.com/lisboaparticipa)  
[op@cm-lisboa.pt](mailto:op@cm-lisboa.pt)

<https://vimeo.com/164691772>



# LISBOA