

CLIMAS: CLIMAtE change citizens engagement toolbox for dealing with Societal resilience

Jan 2023

AELITA SKARZAUSKIENE, Vilnius TECH, Lithuania



This project has received funding from the European Union's Horizon Europe Research and Innovation program under the grant agreement No 101092100



Context



Climate change: global emergency with huge social, environmental and economic impacts

Real problem



- Policies act on the visible part of an 'iceberg' but the transformative potential towards climate mitigation and adaptation lies at a deeper infrastructure and mental construct level
- Citizens' recommendations are often not taken up by policymakers
- Vulnerable societal groups are excluded (e.g., indigenous people, children, disabled, young)

Policymakers, experts and stakeholders' actions are not enough

Expectations

360° citizen engagement: to ensure recommendations are more accepted by policymakers

- Inclusivity - gender diversity and intersectionality approach
- Anti-patriarchal facilitation
- Value-based approach



**TIME IS RUNNING
OUT!**

PROJECT INTRODUCTION

CLIMate change citizens engagement toolbox for dealing with Societal resilience



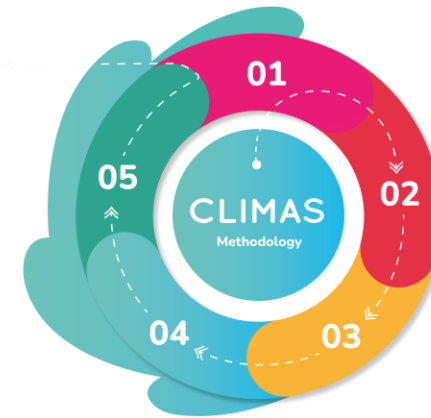
Proposed solution



CLIMAS project will use **design-thinking in Living Labs and Climate Assemblies** to create alternative tools that stimulate deliberative democracy in climate policymaking

05 Share broad and wide: ensure impact

04 Elaborate recommendations: involve citizens in policy-making processes



01 Get ready and explore: identify barriers and facilitators of citizen participation

02 Engage, empathise, empower: co-create the Toolbox

03 Test with end-users: test the Climate change citizens engagement Toolbox in Climate Assemblies

CLIMAS will deliver a climate change citizen engagement Toolbox that is:

- empowering
- engaging
- adaptable to different socio-cultural contexts

Citizen Science and Climate Assemblies

- Together with CS, Citizens` assemblies` approach to public engagement has gained popularity following perceived successes in different countries
- “Citizens` assemblies” can be defined as ‘carefully designed forums where a representative subset of the wider population come together to engage in open, inclusive, informed, and consequential discussions on one or more issues”
- Citizens` assemblies are a type of mini-public.

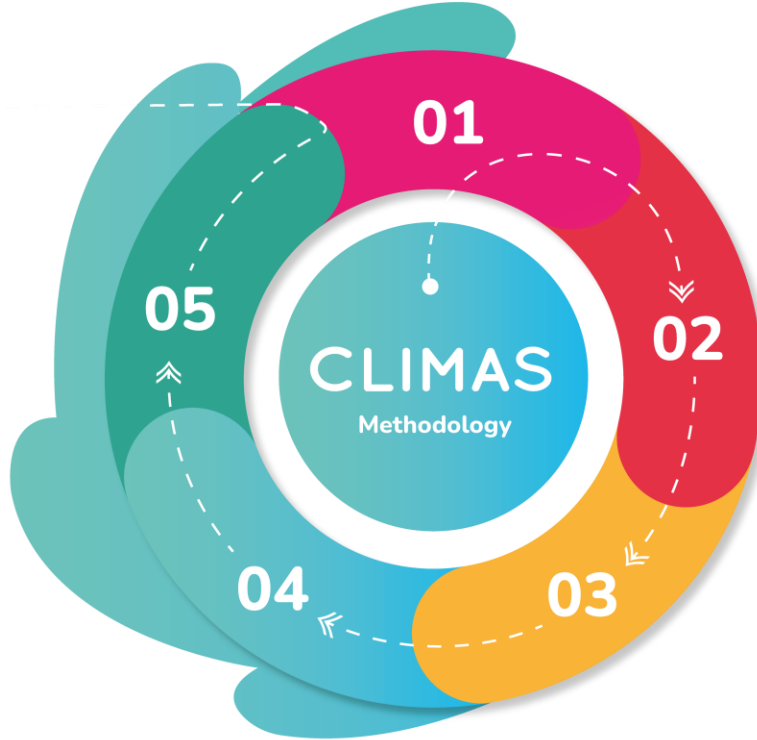
Approach

05 Share broad and wide: ensure impact

Continuously deliver training sessions and share knowledge with all relevant stakeholders, including cross-exchanges. Promote empowerment and engagement through dedicated campaigns across the different EU regions.

04 Elaborate recommendations: involve citizens in policy-making processes

Deliver innovative climate assembly guidelines for practitioners, facilitators and policy makers promoting them across Europe.



01 Get ready and explore: identify barriers and facilitators of citizen participation

Start with the identification of barriers, drivers, bottlenecks, and good practices in past Climate Assemblies throughout Europe.

02 Engage, empathise, empower: co-create the Toolbox

Build empathy and define the problem through design-thinking, citizen science and value-based approaches in Living Labs; involve citizens and stakeholders in the co-creation of a Toolbox that is useful to all people involved in Climate Assemblies at any level.

03 Test with end-users: test the Climate change citizens engagement Toolbox in Climate Assemblies

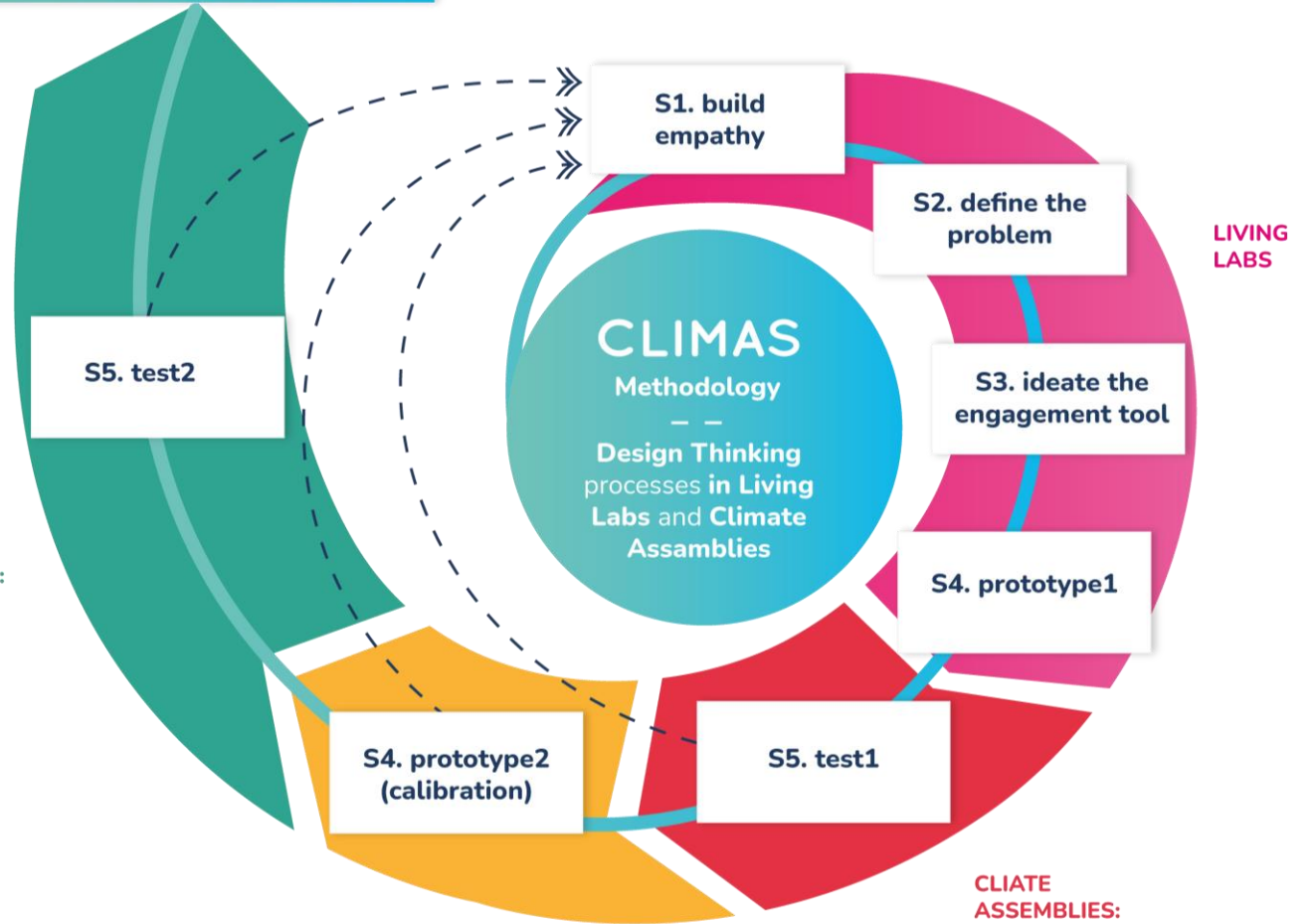
Test the prototype tools in actual Climate Assemblies and Living Labs ensuring that they respond to the needs of people who might benefit from it: Climate AssemblyCA promoters, organisers, participants, and local authorities.



Alternative empowering
and engagement mechanisms

Co-creation process

CLIMATE
ASSEMBLIES:
PLENARY



LIVING
LABS

LIVING LABS

CLIMATE
ASSEMBLIES:
DELIBERATION
ROUND TABLES



Target groups

Climas will involve various target groups in co-creating tools from early phases to final testing. The team will adopt an ethical, user-centric approach.

We aim to include as many communities as possible across EU regions, regardless of physical, cognitive, sensorial conditions, socio-economic or educational levels.



Entrepreneurs



Policy-makers



Social Partners



Citizens



Civil society



Academics

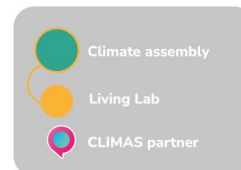


Experts

Vision

The ambition of CLIMAS is to support a societal transformation to climate resilience (society resilient by design)

- by empowering citizens through an innovative toolbox expected to democratise Climate Assemblies within 150 EU regions.
- by delivering insights and recommendations to support the policymaking process.





Azores



Madeira and Canary Island

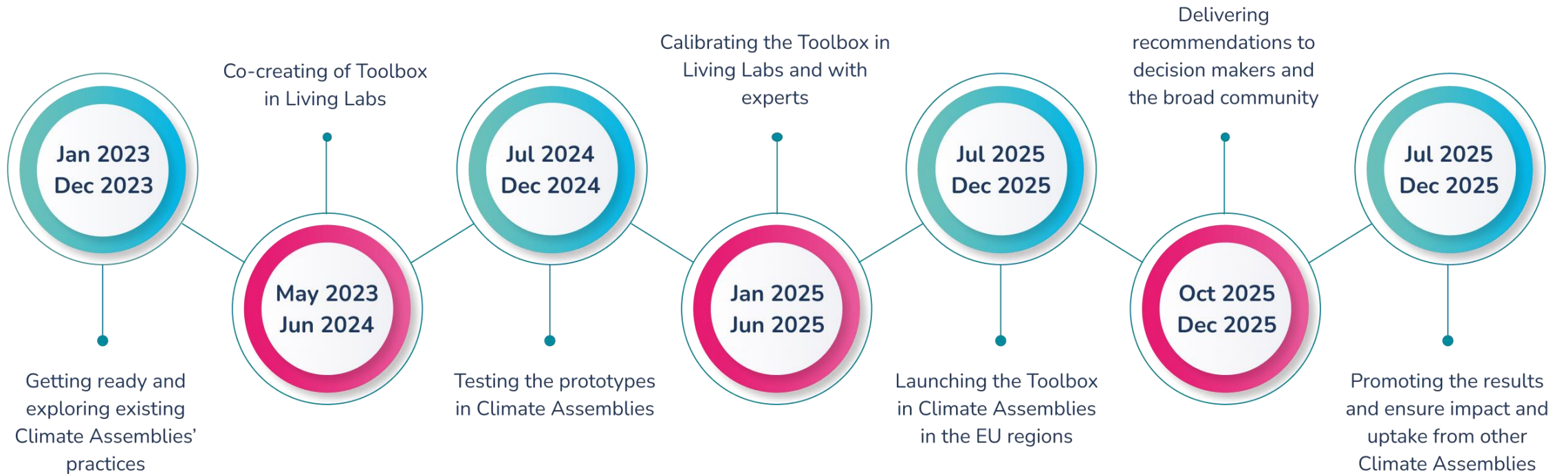
-  Climate assembly
-  Living Lab
-  CLIMAS partner



Biogeographical regions of Europe

-  Artic
-  Boreal
-  Atlantic
-  Continental
-  Alpine
-  Pannonian
-  Mediterranean
-  Macaronesian
-  Steppic
-  Black Sea
-  Anatolian

Proof of success

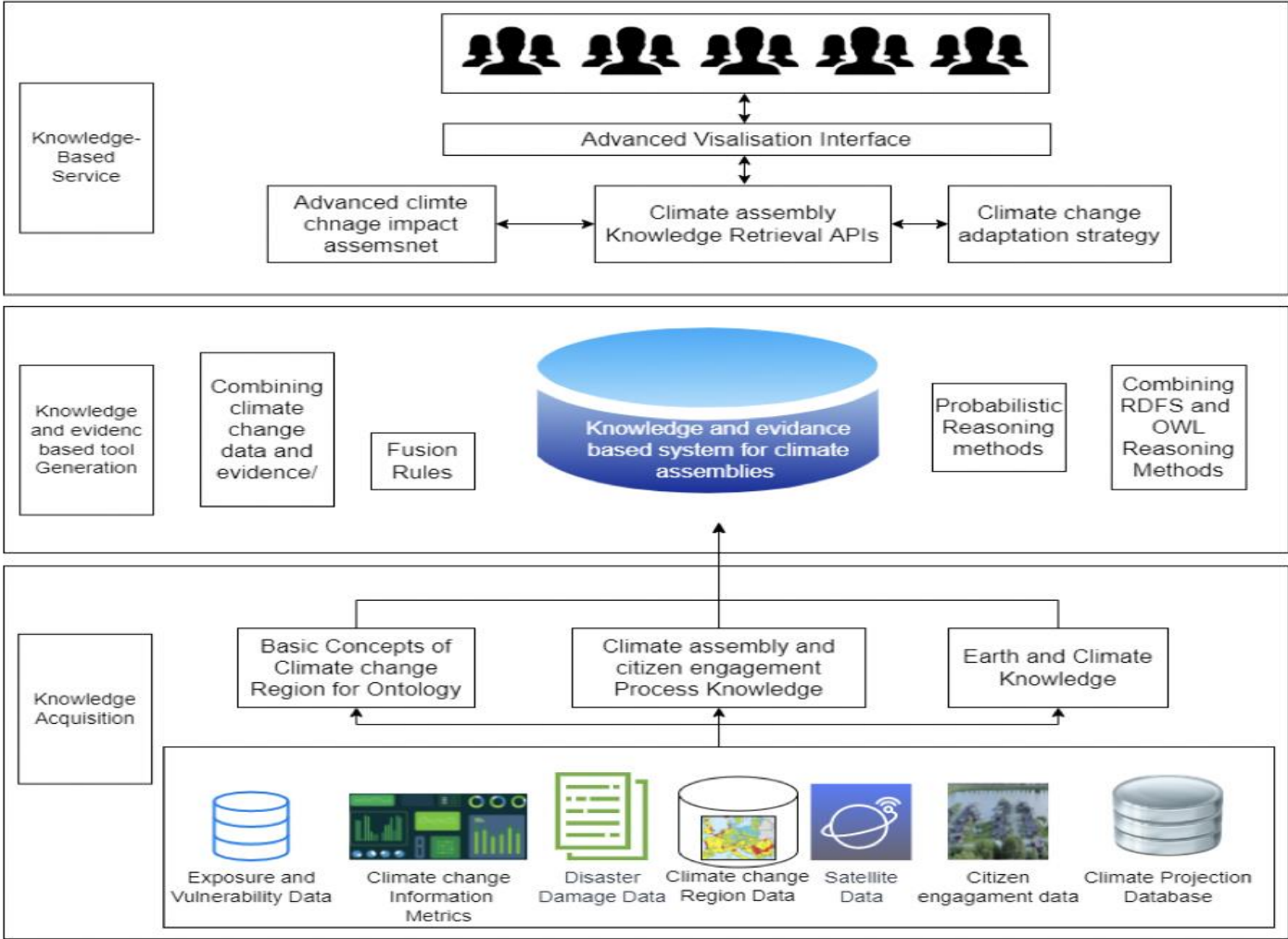


Duration: 36 Months - from January 2023 to 31 December 2025

EU Contribution: € 2 817 902,50

Coordinator: Vilnius Tech - VILNIAUS GEDIMINO TECHNIKOS UNIVERSITETAS

From (what has been usually done)	To (what we propose to do)
Technical questions.	Value/moral based questions.
Lists of solutions	Balanced resolutions to dilemmas. Trade-offs considerations.
Which are the best solutions to solve the problem?	How do these solutions affect us? Which is the cost for the administration? Who pays? Where does the money come from? Which minorities or interest groups are affected?
Brainstorming solutions after hearing experts	Experts select the best possible solutions and present them to citizens with their costs and benefits.
Prioritization taking into account it's benefits	Comparison taken into account cost and benefits. -> Recommending the right balance.
<p data-bbox="468 1053 652 1096">Example</p> <p data-bbox="275 1110 843 1210">What are the solutions to a more intense drought?</p>	<p data-bbox="1549 1053 1732 1096">Example</p> <p data-bbox="876 1110 2405 1325">What are the dilemmas related to the different solutions? For example, to build a dam? Or to save water? Or to reduce irrigated crops? Citizens can compare the costs and benefits of each of them and opt for a balanced solution.</p>



Who we are



Thank you for your attention!

Aelita Skaržauskienė

info@climas-project.eu

www.climas-project.eu



CLIMAS

CLIMAtE change citizens engagement
toolbox for dealing with Societal resilience

FOLLOW US: @CLIMAS_EU



This project has received funding from the European Union's Horizon Europe Research and Innovation program under the grant agreement No 101092100